

VICTORYone  
AMARA

 SAVVIOUR  
BUILDERS  
DEVELOPMENT PARTNER

# VRIDHI TOWERS

A home is not just an address,  
it's the growth of life





**SAVVIOUR**  
BUILDERS

## Overview

**SAVVIOUR**, is a private limited company which is incorporated in 2006. Since then, the company is actively involved in the real estate industry and engaged in the development of group housing residential projects, townships and commercial projects. SAVVIOUR has maximised its efforts in fulfilling the needs of the customers to purchase their dream home. SAVVIOUR has tried to set new benchmarks in the real estate industry by construction of small residential buildings to development of multi-dimensional townships.

SAVVIOUR follows the motto of "**Crafting dreams into reality**". SAVVIOUR believes in providing complete satisfaction to their customers and gaining their trust. And SAVVIOUR will continue to harness the power of commitment and reliability to reach higher and construct better with each project.

All of this couldn't have been possible without the support of the team of our eminent architects, engineers, planners and business associates who have also taken the group to an all-time high and motivated to continue with the same zeal of satisfying the needs of the customers.

SAVVIOUR is constructing the buildings based on your trust and you are invited to build your future with us. We will try our level best to help you realize your dream of living in style.

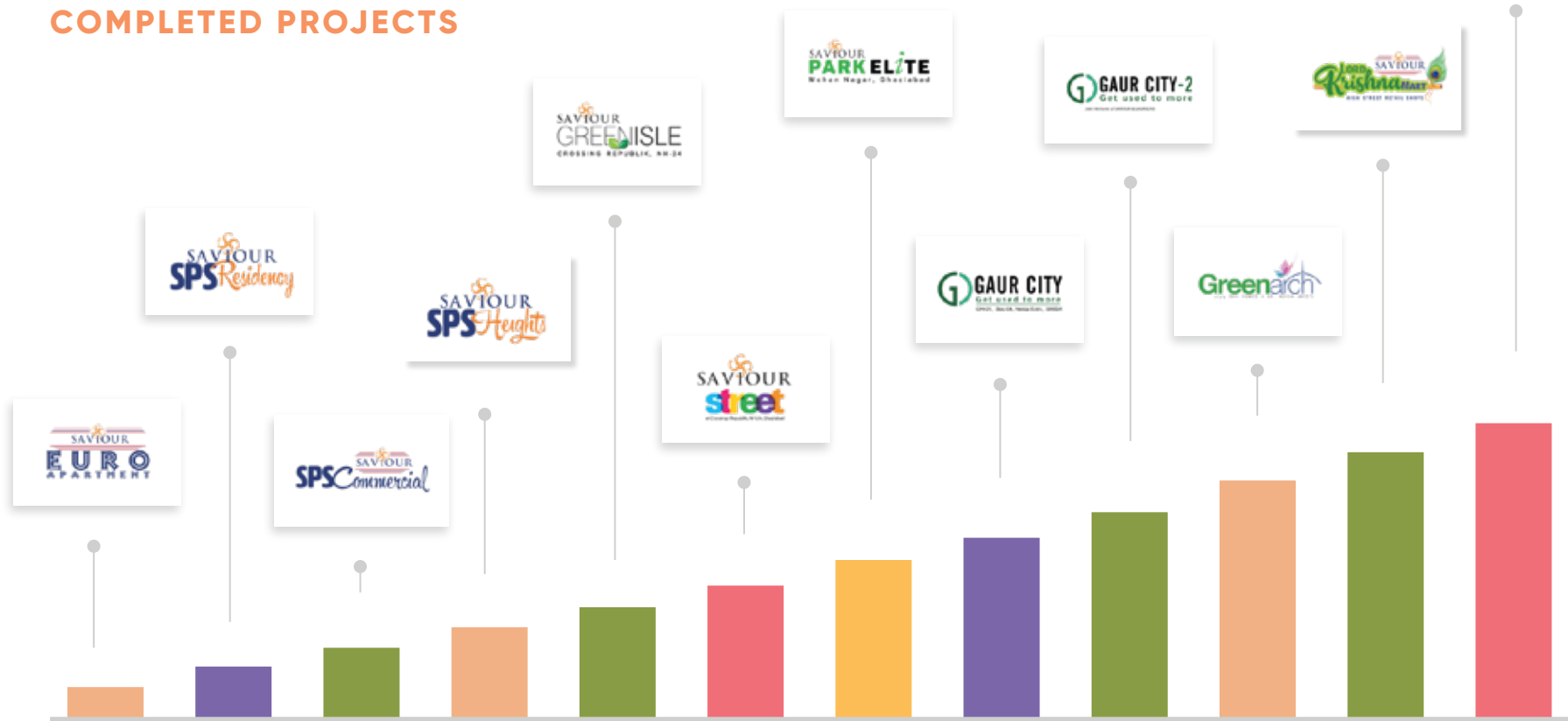
# Saviour in a Glimpse



## ONGOING PROJECT

- Lord Krishna Mart (OC APPLIED)
- Lord Krishna Medlley

## COMPLETED PROJECTS



# The Project

- **SAVIOUR** has joined hands with **VICTORYONE** to fulfill the desire of a dream home.
- Located at an excellent location surrounded by well developed **residential and commercial projects, schools, and malls.**
- Includes all the facilities and amenities required in a modern society.
- Adjacent to a lush green **7.5 acres park** giving you a eco-friendly environment.





- Possession already given to **400 apartments** and **300+ families** residing in the society.
- Commercial shops within the society premises to cater the daily needs of the residents.
- Conveniently connected to **Delhi, Noida and Ghaziabad.**
- Project approved from all main Financial institutions/bank like ICICI, HDFC, etc.
- Walking distance from proposed metro station.





# Excellent Project Attributes

- International Building Construction System
- Power Backup for Common Area Facilities
- Spacious Elevators
- Power Backup 24-hour
- Intercom Facility
- Earthquake resistant
- ALUMINIUM FORM WORK (International Construction Technology) - TOWER (E & F)



# A-One Amenities



State-of-the-art Club  
with all Modern  
Amenities



Swimming pool



Jogging Track



Ultra-modern  
Gym



Space for  
Unisex Beauty  
Salon



Convenient  
Shopping Area  
for Daily Needs



Space for  
Cafeteria



Kids Play Area



Basketball &  
Badminton  
Court

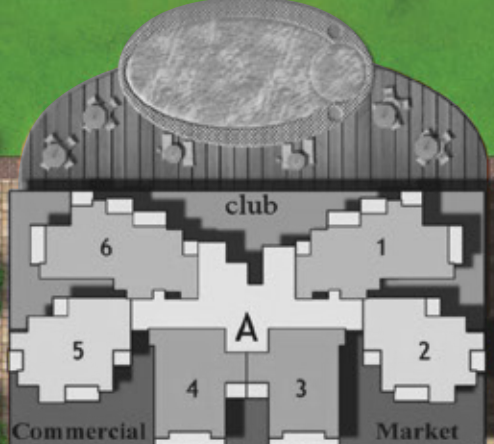
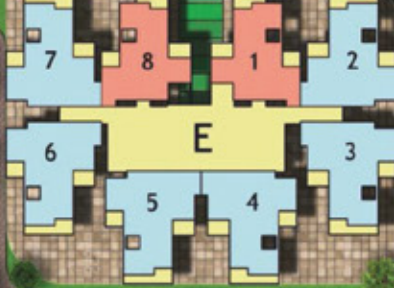
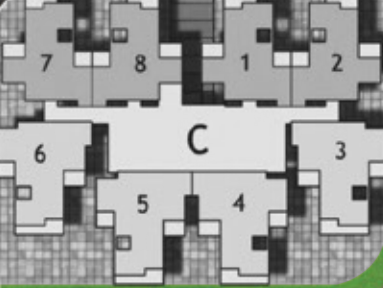


Space for  
Yoga, Spa, and  
Steam



Indoor games: Table  
Tennis, Card Room,  
Pool Table





FUTURE TOWER

60.0 m WIDE ROA

THEME PARK

Ramp

k

a



# Legend: Landscape Elements (Residential)

- Club
- Tower Drop-OFF
- Bamboo Court

- Party Lawn
- Grand Lawn
- Jogging Track

- Boundary Plantation
- Table Tennis
- Carrom Tables

- Badminton Court
- Half Basket Ball
- Yoga/Meditation Area

- Kids Pool
- Kid's Play Area
- Swimming Pool

- 2 Bedrooms + 2 Toilets
- 2 Bedrooms + 2 Toilets + Study



## CLUSTER PLAN



# 2 Bedrooms + 2 Toilets

TOTAL AREA	97.54 Sq.mtr
CARPET AREA	53.23 Sq.mtr
BALCONY AREA	11.98 Sq.mtr

1 Sq.mtr = 10.764 Sq.Ft.



# 2 Bedrooms + 2 Toilets + Study

SUPER AREA	112.41 Sq.mtr
CARPET AREA	58.71 Sq.mtr
BALCONY AREA	11.98 Sq.mtr

1 Sq.mtr = 10.764 Sq.Ft.

## CLUSTER PLAN



# Specifications

## Structure

Earthquake resistant frame structure with shear walls and all internal and external walls are of RCC (no brickwork and plaster), using international construction technology designed by experienced structural engineers and proof-checked by reputed engineering college.



## Flooring

- Wooden Laminated Flooring in Master Bed Room
- Digital vitrified tiles in other Bedrooms
- Ceramic tiles in Toilet and Balconies





## Door & Window

- Outer doors and windows aluminium powder coated/UPVC
- Internal wooden frames made of Marandi or equivalent wood
- All doors are laminated flush shutters



## Electrical

- Adequate light power points in wall and ceiling
- ISI marked copper wire in PVC conduits with MCB, Modular switches
- Intercom Facilities for communication with lobby, main gate and other apartments



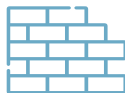
## Kitchen

- Semi-Modular kitchen and granite working top along with stainless steel sink
- Individual RO water unit
- Ceramic tiles on 600mm dado above working platform



## Toilets

- Plumbing done with Prince/Astral or equivalent CPVC/PVC Pipe
- Granite counter top wash basin
- Wall tiles (300x600mm) upto false ceiling
- Jaguar, Somany, Hindware, Supreme or equivalent CP fitting



## Walls & Ceilings

- POP/Gypsum platser finish walls with Oil Bound Paint in pleasing shades
- Space for wardrobe in all Bedrooms







# Location Advantages



10 min. from Fortis Hospital, Yatarth Hospital



Renowned colleges and banks in the proximity



Proposed Metro Station



Reputed schools, hospitals, and malls in the proximity



15 min. drive from sector-18 market, Noida



Beautiful Landscape Gardens



Adjoining Authority Park



# Location Map





VICTORY ONE  
AMARA



SAVVIOUR  
BUILDERS  
DEVELOPMENT PARTNER

# VRIDHI TOWERS



[Info@saviourindia.com](mailto:Info@saviourindia.com) | [www.saviourindia.com](http://www.saviourindia.com) | Contact No.- 0120-4104506

---

Corporate office- C-110, Sector-65, Noida | Site Office - AMARA-GH-05 C, Sector- 16, Greater Noida West | RERA NUMBER UPRERAPRJ6187 | [WWW.UP-RERA.IN](http://WWW.UP-RERA.IN)